

Distributed by:

**JAMECO**<sup>®</sup>  
ELECTRONICS

**www.Jameco.com ♦ 1-800-831-4242**

The content and copyrights of the attached  
material are the property of its owner.

Jameco Part Number 1299761



## FEATURES AND SPECIFICATIONS

### Features and Benefits

- Sizes 2 to 3 circuits
- Low profile
- High reliability rising clamp
- Modularity
- Captive screw
- Manufactured to VDE standards
- Available in blocks of 2 and 3 positions, which allow any configuration to be assembled with minimum inventory

### Electrical

Voltage: 250V  
 Maximum Current: 13.5 Amp  
 Insulation Resistance: > 5,000 Megaohms

### Mechanical

Max. Tightening Torque: 7 in. lbs, .79 Nm  
 Operating Temperature: 110°C  
 Wire Strip Length: 0.20"/0.24" or 5/6 mm

### Physical

Barrier Insulator: Polyamide 94V-0, Black  
 Screws: 3mm Copper Alloy  
 Screw Plating: Nickel  
 Cage Clamp: Copper alloy  
 Cage Clamp Plating: Nickel  
 Pins: Copper Alloy  
 Pin Plating: Tin  
 Wire Range: 14 to 30 AWG, 1.5 to 0.2mm<sup>2</sup>

5.08mm (.200") Pitch  
 Beau Eurostyle®  
 Low Profile  
 Fixed Blocks

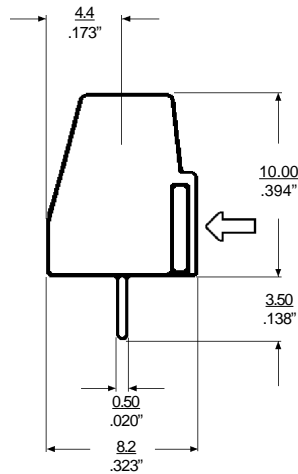
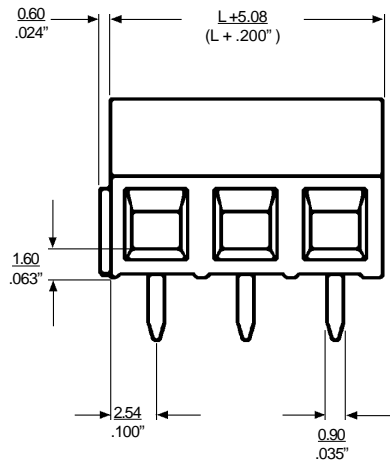
39880  
 Modular



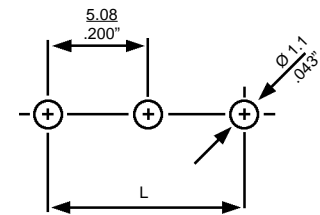
### Reference Information

UL: File E 167473  
 CSA: File LR 102896  
 VDE: Reg. N. 5659 ÜG

## CATALOG DRAWING (FOR REFERENCE ONLY)





RECOMMENDED PTH PATTERN



## ORDERING INFORMATION AND DIMENSIONS

Part Number *		# of Circuits	L	
Order #	Engineering #		in	mm
39880-0302	880102	2	.20	5.08
39880-0303	880103	3	.40	10.16


<b>Molex</b>		<b>Specification#:</b> PPS.88.002			
		<b>TITLE:</b> Product Performance Specification for: 3988003XX (8801XX), 5.08mm Fixed, Straight			
<b>A P P R O V A L S</b>		<b>REVISION:</b>		<b>A</b>	
Signature _____ Title _____		<b>EFFECTIVE:</b>		<b>July 27, 2004</b>	
Signature _____ Title _____		<b>WHERE USED:</b>			
Signature _____ Title _____		<b>PAGE</b>	<b>1</b>	<b>OF</b>	<b>2</b>
<small>Form #3111-1401-0005 Rev 1/01</small>					

PART NUMBERS	DESCRIPTION
3988003XX (8801XX)	5.08 mm (.200 in) Fixed, Straight Terminal Block

ELECTRICAL	RATING
UL Recognized...	300 VAC, 13.5A w/16-30 AWG
CSA Certified:	300 VAC, 13.5A w/15-30 AWG
Maximum Current (IMQ, ESS):	17.5A
Contact Resistance:	< 15mΩ
Insulation Resistance:	> 10 <sup>9</sup> Ω (500 V DC)

MATERIAL	DESCRIPTION
Insulator:	Nylon, PA6.6
Color:	Black
Terminal:	Copper Alloy
Plating:	Tin
Screw:	M3, Slotted, Copper Alloy
Plating:	Nickel
Cage Clamp:	Copper Alloy
Plating:	Nickel

ENVIRONMENTAL	RATING
(Base Material) UL RTI:	105°C

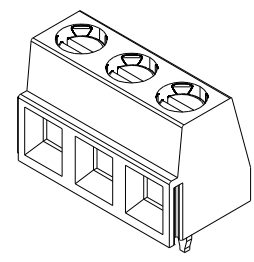
	REVISION:		A		Specification#:	PPS.88.002
	PAGE	2	OF	2	TITLE:	<b>Product Performance Specification for:            3988003XX (8801XX), 5.08mm Fixed, Straight</b>
	Form #3111-1401-0005 Rev 1/01					

DIMENSIONAL	RATING
Terminal Centers:	5.08mm (.200 in)
Housing Height:	10.00mm (.394 in)
Housing Width:	8.20mm (.323 in)

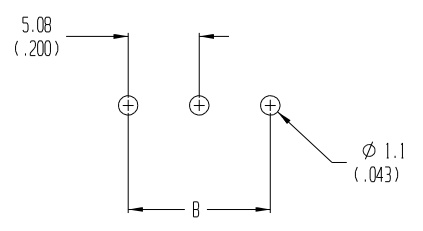
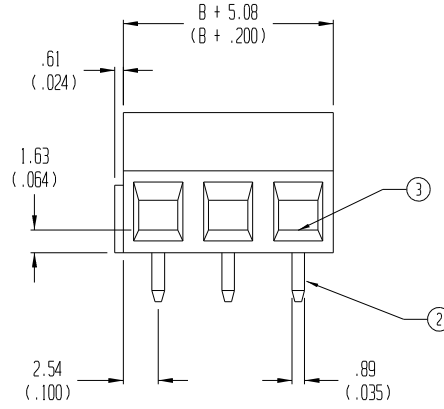
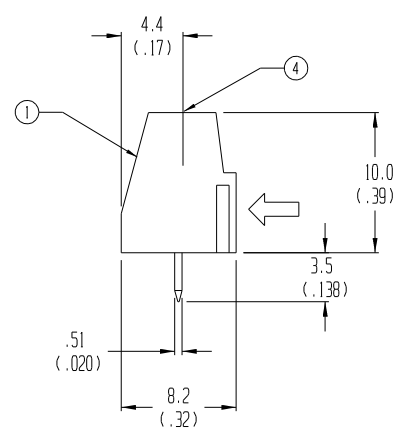
FIELD USE	RATING
Wire Range:	1.5 - .05 mm <sup>2</sup> , #15 - #30 AWG
Strip Length:	5.0 mm (.20 in)
Tightening Torque:	0.6 Nm (5.3 in-lbs)

FLAMMABILITY	RATING
Flame Rating:	UL 94 V-0

REVISIONS		
LETTER	ECO#	DATE
A	Original Release	07/27/04



MATERIAL NO.	NO. OF CIRCUITS	ENG NO. (BEAU NO.)	DIM. "B"	
"XX"			IN.	MM
39880-0302	02	880102	.20	5.1
39880-0303	03	880103	.40	10.2
39880-0304	04	880104	.60	15.2
39880-0305	05	880105	.80	20.3
39880-0306	06	880106	1.00	25.4
39880-0307	07	880107	1.20	30.5
39880-0308	08	880108	1.40	35.6
39880-0309	09	880109	1.60	40.6
39880-0310	10	880110	1.80	45.7
39880-0311	11	880111	2.00	50.8
39880-0312	12	880112	2.20	55.9
39880-0313	13	880113	2.40	61.0
39880-0314	14	880114	2.60	66.0
39880-0315	15	880115	2.80	71.1
39880-0316	16	880116	3.00	76.2
39880-0317	17	880117	3.20	81.3
39880-0318	18	880118	3.40	86.4
39880-0319	19	880119	3.60	91.4
39880-0320	20	880120	3.80	96.5
39880-0321	21	880121	4.00	101.6
39880-0322	22	880122	4.20	106.7
39880-0323	23	880123	4.40	111.8
39880-0324	24	880124	4.60	116.8
39880-0325	25	880125	4.80	121.9



ITEM	QTY.	DESCRIPTION	MATERIAL	FINISH
4	XX	SCREW, M3	COPPER	NICKEL
3	XX	CAGE CLAMP	COPPER	NICKEL
2	XX	TERMINAL, PC	COPPER	HOT TIN DIP
1	1	INSULATOR	POLYAMIDE	BLACK

ECN# 3946  
 DRN: CY 09-03-04  
 CH'K:  
 APPR:

QUALITY SYMBOLS  
 MAJOR =  
 CRITICAL =  
 SPC =

GENERAL TOLERANCES:  
 (UNLESS SPECIFIED)

	mm	INCH
4 PLACES		±.0015
3 PLACES	±.038	±.005
2 PLACES	±.13	±.01
1 PLACE	±.3	

ANGULAR: ±2°  
 DRAFT WHERE APPLICABLE MUST REMAIN WITHIN DIMENSIONS

SCALE: 3:1  
 DESIGN UNITS:  mm  INCH  
 DRAWN BY & DATE: R. KEMP 5-14-02  
 CHECKED BY & DATE: R. STONE 5-14-02  
 APPROVED BY & DATE: P. WALTZ 5-14-02  
 CAD FILENAME: 8801XX.PRT

PROJECT NO. 04-124  
 DIMENSIONS:  mm  INCH  mm ONLY  INCH ONLY  
 SHT REV  
 REVISE ON CAD ONLY  
 TITLE: 5.08mm EUROSTYLE LOW, SINGLE ROW FIXED BLOCK  
 MOLEX INCORPORATED  
 MATERIAL NO. SEE CHART  
 DRAWING NO. SD-39880-003  
 SHEET NO. 1 OF 1  
 THIS DRAWING CONTAINS INFORMATION THAT IS PROPRIETARY TO MOLEX INCORPORATED AND SHOULD NOT BE USED WITHOUT WRITTEN PERMISSION.  
 SIZE B